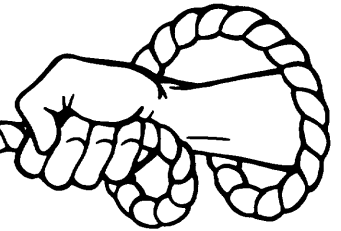


Lifeline

AN INTERGROUP PUBLICATION



SEPTEMBER 1982

ORANGE COUNTY, CALIFORNIA

VOL. XX NO. 9 (USPS 312-680)

STARTING OVER...

IF YOU ARE COMING BACK

"I am sorry to hear of the temporary interruption in your sobriety". These are the words expressed by our co-founder, Bill W., in response to a letter from a member who drank again after a few years of sobriety. All is not lost!!!



As one who has gone out again after prolonged sobriety I share with you your feelings of anguish, disgust and the resurgence of the old feelings we had when we originally came into A.A.; feelings that seemed no longer a part of our lives: Remorse, self-pity and the most dreaded feeling of all, FEAR as only an alcoholic knows.

We have blown it. We've let ourselves and everybody down. We have lost what we had. We have to start all over again, etc.

To start all over again seems defeating and discouraging us; after all, we lost our time in A.A.; we are no longer an old-timer, an acknowledged sober member of our group, one to be asked to speak, one to be

By Dan M.
Huntington Beach

approached for counsel. Nothing could be farther from the truth.

After all, has the knowledge and living guidelines we gained in A.A. left us? Disappeared? Of course not! Our minds and emotions may have been temporarily side tracked, allowing us to slip back into the abyss of drunkenness, causing us to re-embrace our old ways, the old thinking, the old suffering and the old feelings of torment. The mechanics for the most part are the same as our initial introduction to the program, with some minor changes of attitude.

"Be as a child", the bible tells us. Emotionally and intellectually assume the outlook of a newcomer and listen with a new innocence and the open-mindedness of a novice. Strive to rebuild the emotional and spiritual foundation that has slipped away. Reapply the simple basics again. Don't drink. Go to meetings. Get a sponsor. Read the book. Re-work all the steps, especially the fourth and fifth. Mainly, believe that you have not lost anything, only misplaced it for a while.

A.A. has 'come of age' and is now old enough to experience the relapse of members with long term sobriety. Studies on the subject reflect two truths to be self-evident. One, when we drank again we had lost our grasp on sobriety by not attending our meetings. Or, we'd stopped attending emotionally. Two, The return to a sober way of life was greatly hindered by our ego. We do not want to be a newcomer again, and start over. We do not want to lose our time in A.A.

(Continued on page 2)

UNITY!



John Donne, an English poet, once wrote that no man is an island, separate and independent from the rest of the world but all of us are part of the same large body of mankind. He went on to say that if something happens to any one of us, all of us are in some way affected. And if someone dies, "Do not ask for whom the bell tolls. I tolls for thee."

The same is true for us in A.A. Sometimes we think that our own little A.A. group is all we need to keep our sobriety. This is not true. No group could exist for very long without the help and guidance and services it receives from the whole world-wide structure of Alcoholics Anonymous.

A.A. is like a tree with one trunk and many branches. If a blight attacks any part of a tree the whole thing becomes afflicted. Each part is dependent on every other part.

That is why it is important for every group to be active in inter-group, area and state affairs. That is the only way your group and mine can avoid the possibility of ending up as dead and withered as a leaf on the tree.

AA Grapevine
March 1963

STARTING OVER

(Continued from page 1)

Our length of sobriety is exemplified to the newcomer to show it can be done, but to us old timers it can be a hindrance to recapturing sobriety because we have engaged in an ego trip, taking ourselves too seriously. We deal in principles, not personalities in A.A. Yet we are inclined to raise an old time sober member to an elevated status, putting him on a pedestal, singling him out to speak at special meetings, approaching him for his knowledge and wisdom and missing the fact that we are all simply drunks trying to work a program of sobriety. After all, we can erase it all with one single drink.

For a long time I struggled to regain what I once had. I would come off a drunk and return to meetings with total sincerity, only to find myself drunk again in a couple of months. Finally, the key that opened the door to renewed sobriety was given to me by a member who had gone before me. Although I was attending meetings with a renewed drive for sobriety I had become a booze fighter and as time passed the mind and emotions would slowly slip backwards until the only relief I could get was to drink. The answer, I learned, was to re-approach the program with the same advice one would give a newcomer who is a periodic (which is what we have become). I had to work and prepare myself for the time I knew would come again and I would want to drink. When that time did come, I was able to overcome the urge until it passed. In time, the periods became farther and farther apart until now I no longer want to drink.

REMEMBER: Those who don't are doomed to repeat!

DON'T ANALYSE: That's the favorite exercise of the intellectual snob!

KEEP YOUR MEMORY GREEN: You are coming from a place of fear, anxiety, depression, remorse, self-pity, shakes, sweats, dry heaves and guilt.

COMPARE: Be born again to sobriety, you know what it was like.

There is a line from the New Testament: "God, remove from my hand this cup of trembling".

Keeping Up Your 'Dues'?

("There are no dues or fees for A.A. membership.")

We often hear fellow AAs say, "I paid my dues." Meaning, of course, that the toll alcoholism extracted qualifies them for membership in the fellowship.

I've got news for them; that was just the initiation fee. In the same context in which they used the word, it is after you get here that you should start paying your "dues."

And just how does one go about doing that? Fortunately, there are some tried and proven ways. Here are a few of them for your consideration:

* Let your feelings be known on A.A. "issues," and then see to it your group conscience is represented at the Zone, Intergroup, Central Service and General Service levels.

* Be willing to serve as group secretary, treasurer, CSR, GSR, etc.

* Be active in your group's steering committee and/or on such things as the Jamboree Planning Committee.

* Help set up your home group's meetings.

* Be a greeter at the door of those meetings.

* Approach newcomers, make

them feel welcome, give them your phone number.

* Arrange to pick up or have picked up those members of the group who do not have rides to and from meetings.

* Sign up for 12th Step calls.

* Answer phones at Central Office as a once-a-week or every-other-week regular or as a standby.

That's just a partial list, of course. But it gives you something to start on, if you aren't doing any of these things now and are interested in repaying A.A. for some of what it has given you.

It is said that action is the magic word in A.A. Many people with commitment to the program "above and beyond" what is outright asked of us attest to that as fact.

Be forewarned --- the vast majority of people who get active in A.A. to "pay it back" find that they just keep getting "rewards" that make it next to impossible for them to "get even."

The more you give, the more you get. Can't beat a deal like that. So, why not begin paying your "dues," if you aren't trying to do so already?

M. M.
Los Angeles

GOOD NEWS!

THE ORANGE COUNTY CENTRAL OFFICE WILL NOW MAIL A.A. BOOKS & LITERATURE TO A.A. GROUPS & MEMBERS OF A.A. IN ORANGE COUNTY. THE COST OF SENDING BOOKS & LITERATURE WILL BE PAID BY THE CENTRAL OFFICE. ORDER FORMS ARE AVAILABLE AT THE CENTRAL OFFICE.

WE WILL ALSO SEND BOOKS & LITERATURE VIA MAIL OR UNITED PARCEL TO NON-A.A. CUSTOMERS & INSTITUTIONS BUT SUCH CUSTOMERS WILL BE REQUIRED TO PAY THE SHIPPING COST. PREPAID SHIPPING IS AVAILABLE ONLY TO A.A. GROUPS AND A.A. MEMBERS.

SEND A CHECK OR MONEY ORDER WITH YOUR ORDER TO:

ORANGE COUNTY
CENTRAL OFFICE
2712 SO. GRAND AVE.
SANTA ANA, CA 92705

IF YOU HAVE ANY QUESTION, PLEASE CALL OUR OFFICE. 556-4555.



For The Lifeline

ALK-A-TION

SEPTEMBER						
SUN	MON	TUE	WED	THU	FRI	SAT
			1	2	3	4
5	6	7	8	9	10	11
12	13	14	15	16	17	18
19	20	21	22	23	24	25
26	27	28	29	30	31	

TWO HOUR MEETINGS
TIME: 10:00A.M. TIL MIDNIGHT

SPEAKERS AGENDA

10AM TIL NOON
 NOON TIL 2:00P.M.
 2:00P.M. TIL 4:00P.M.
 4:00P.M. TIL 6:00P.M.
 6:00P.M. TIL 8:00P.M.
 8:00P.M. TIL 10:00P.M.
 10:00P.M TIL MIDNIGHT

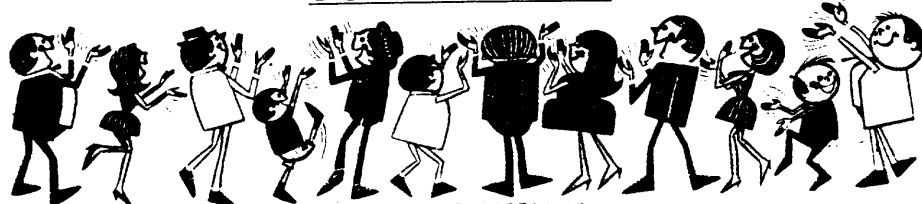
JOHN A. LAGUNA BEACH
 PHIL P. NEWPORT BEACH
 ANGIE D. BLYTH
 JOE Q. LAGUNA BEACH
 FRIENDS FROM CHINO
 CLANCY I. VENICE
 JOHN F. SAN JUAN CAPO



FREE

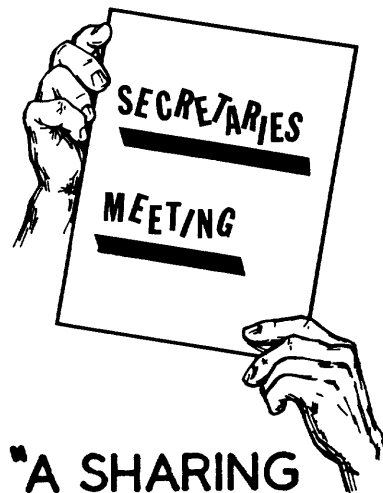
ADMISSION, COFFEE, REFRESHMENTS, PARKING

ALANO CLUB of GARDEN GROVE
9845 BELFAST



PROCEEDS TO LIFELINE

SPONSORED BY THE ORANGE COUNTY INTERGROUP ASSOCIATION OF A.A.



"A SHARING
SESSION FOR
SECRETARIES,
NEW, OLD
& INTERESTED"

**TUESDAY
SEPTEMBER 21
7:30 PM
CENTRAL
OFFICE
2712 S. GRAND**

1. PROBLEMS THAT A GROUP SEC. MIGHT ENCOUNTER.
2. THE GROUP'S RELATIONSHIP TO AA AS A WHOLE.
3. FORMAT SHARING FOR DIFFERENT TYPES OF MEETINGS.

Everyone Can
Participate

Upcoming Events

SO CALIF ASSEMBLY AREA
G.S.O. ANNUAL PICNIC
SEPT. 5TH SUNDAY
RESEDA PARK

SO. CALIF ASSEMBLY AREA
G.S.O. ANNUAL PICNIC
SEPT 5TH, SUNDAY.
RESEDA PARK.

1ST ANNUAL IDYLLWILD AA
ROUND-UP.
IDYLLWILD PINES CAMP
SEPTEMBER 10-11-12TH.

15TH ANNUAL AA CONVENTION
SANTA MARIA FAIR GROUNDS
SEPTEMBER 10-11-12TH.

4TH ANNUAL VENTURA COUNTY
AA CONVENTION - OXNARD.
SEPTEMBER 17-18-19TH.

32ND ANNUAL AA AREA
CONVENTION
OCTOBER 15-16-17TH.
RAMADA, TUCSON.

16TH ANNUAL LAS VEGAS
ROUND-UP
RIVIERA HOTEL
NOVEMBER 12-13-14TH.

19TH ANNUAL NATIONAL AA
WOMENS CONFERENCE
FEB. 18-19-20, 1983.
PHOENIX, ARIZONA.

PLEASE CALL CENTRAL OFFICE
556-4555 FOR FURTHER
INFORMATION.

WE EXTEND OUR SINCERE THANKS TO
ALL THE VOLUNTEERS WHO HELPED PUT
OUT THE LIFELINE:

PAT S. ED F.
HARRY D. BILL McB.
COLLEEN C.

LIFELINE-SEPTEMBER 1982-VOL. XX NO. 9
USPS 312-680. SUBSCRIPTION \$4.00
PER YEAR. PUBLISHED MONTHLY BY
THE ORANGE COUNTY INTERGROUP
ASSOCIATION OF ALCOHOLICS ANONY-
MOUS. POSTMASTER SEND ADDRESS
CHANGE TO: 2712 SO. GRAND AVE.,
SANTA ANA, CALIFORNIA, 92705



★ CELEBRATE THE MIRACLE! ★

WITH

Guest Speaker Meetings ★ 24 Hour Marathons
Al-Anon Meetings ★ Alateen Meetings ★ Spanish Meetings
Moonlight Magic Ball/Banquet Show ★ 5 & 10K Runs
Country & Western Dance ★ Golf Tournament
Dances ★ Luncheons ★ Fellowship
and MORE! ★

PRE-REGISTRATION FORM

Make checks payable to: 31st SCC

Mail to: 31st SCC P.O. Box 10365 Costa Mesa, Ca. 92622



1 <input type="checkbox"/> A.A. <input type="checkbox"/> AL-ANON <input type="checkbox"/> ALATEEN	2 <input type="checkbox"/> A.A. <input type="checkbox"/> AL-ANON <input type="checkbox"/> ALATEEN
Name _____	Name _____
Address _____	Address _____
City _____ State _____ Zip _____	City _____ State _____ Zip _____

Name tag reads: _____	Name tag reads: _____
-----------------------	-----------------------

___ Pre-registration @ \$5.00 each \$ _____

___ Friday Night Country & Western Dance @ \$3.00 each \$ _____

___ Saturday night Moonlight Magic Ball
___ Banquet/Show/Dance @ \$22.00 each \$ _____

___ Al-Anon Luncheon @ \$14.00 each \$ _____

___ Alateen Banquet & Dance @ \$15.00 each \$ _____

___ 5K-10K Run @ \$7.00 each \$ _____

Total Amount Enclosed \$ _____

HEADQUARTERS HOTEL REGISTRATION



800-854-2608 (Nationwide) 800-542-6082 (in California)
714-291-7131 (San Diego) Telex: 695-415

	Standard	Superior	Deluxe
Single	\$50	\$60	\$75
Double	\$60	\$70	\$85

Preferred rates 2 days prior to or 2 days following
Convention subject to availability. **RESERVA-
TIONS MUST BE RECEIVED BEFORE SEPTEM-
BER 10, 1982.**

Mail to: Town & Country Hotel
500 Hotel Circle North
San Diego, Ca. 92108

31st Annual Southern California A.A. Convention October 1-2-3

Name(s) _____

Address _____

City _____ State _____ Zip _____

Date of arrival _____

Date of departure _____

No. in party _____

Time of arrival _____

FIRST NIGHTS DEPOSIT REQUIRED

Send this portion of the form directly to the headquarters hotel.

Related Facilities

ALANA CLUB

Dance

202 West Broadway
Anaheim
Dancing every Saturday Nite
By Matty Jay!!!
Music for the young at heart of all ages
10:00 p.m. to 2:00 a.m.
Phone: 535-9977
or
535-0900
Last Saturday of the month - LADIES ADMITTED FREE

FRIENDSHIP CLUB

2191 Orange-Olive Road
Orange
Dance every Saturday
9:30 p.m. to 1:00 a.m.
\$2.00
Buffet last Saturday each month
4:00 p.m. to ...
\$2.50

ALANO of COSTA MESA

Dance

2040 Placentia Ave.
Every Saturday Night
Dinner at 5:30 p.m.
\$3.00 Members - \$4.00 Non-members
Dance: 10:00 p.m. to 2:00 a.m.

ALANO OF GARDEN GROVE

Dance

9845 BELEFAST DR.
GARDEN GROVE
EVERY FRIDAY NIGHT
10 PM TO 1:30 PM
Members: \$2.00 Non-Members: \$2.50



CANYON CLUB

Sunday Brunch

1946 Broadway
Laguna Beach
Ham-Eggs-Pancakes-Coffee
Adults: \$2.00 / Kids: \$1.50
9:00 A.M. - 11:30 A.M.
Followed by meeting
Third Sunday of each month
Next Date Sept. 19

FULLERTON ALANO CENTER

(705 Club) 705 N. Harbor Blvd.
Fullerton
Last Saturday of each month
Afternoon Get-together
1:30 p.m. - 4:00 p.m.
Food & Fun
Adults: \$2.00 / Kids under 12: \$1.00
Next Date: Sept 25'

Breakfast every Sunday
7:30 a.m. to 10:00 a.m.
Food & Fellowship
Two eggs to order-Pancakes-Sausage & Coffee
Adults: \$2.00 / Kids: \$1.00 ea.

Dance
Third Friday of each month
10:30 p.m. - 1:00 a.m.
Music to suit your fancy
Everybody welcome
\$2.00 each
Next Date: Sept. 17

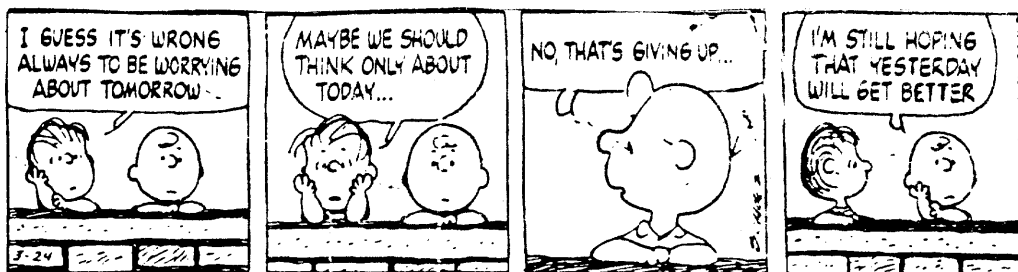
THE NEW PERSON - WHOSE RESPONSIBILITY?

Alcoholics are lonely people. They are denounced, ridiculed, damned, coddled and cajoled by their friends and families. They are tolerated, shunned and ignored by the public. They are questioned, observed and examined by psychiatrists. Their loved ones plead with them, lie about them and threaten them. They are preached to, and prayed over by the clergy. Yet all this tumult has no effect on the alcoholic's drinking. His only source of solace and ease is in the bottle. There he finds companionship and release from his loneliness, there he finds courage to retaliate against those infringing on what he thinks are his rights. In the bottle he finds, at least temporary release from his worries and fears.

For this temporary release the bottle demands a heavy toll. It demands his time, his money, his self-respect, his job, his home, his friends, and his family; and when the alcoholic cannot meet the demands, the bottle leaves him to the mercy of his craving, his poverty and his self-pity.

Defeated and stripped of all his material possessions and his spiritual possessions the alcoholic comes to his first AA meeting. There he stands at the crossroads of his life, alone with his loneliness, alone with his nakedness, alone with his remorse, his debts, his discouragements; burdened by his worries and suspicions; a stranger in a strange land, searching for companionship, for something to ally his loneliness, his suspicions, worries and fears.

I AM RESPONSIBLE!



Group Outlook

WHAT DID YOU DO TODAY



So you've been around for many years, helping to spread AA. You've worked like hell since you first came in, But what did you do today?

I heard your pitch, it was kinda long, you really told them how You worked the steps in '41, But how are you working them now?

Do you still get up from your soft warm bed When someone is in trouble? Do you grab your hat and your AA book And get there on the double?

Or have you forgotten the early times When you were sort of new? Maybe you've been around so long That AA's old hat to you.

Maybe you're one of the Senior Saints, Sober and satisfied; Maybe you've forgotten when you were sick, And when you damn near died.

Maybe I shouldn't bring it up, Maybe you're to blame But just for the hell of it Mister, What did you do today?

Have you been around so cockeyed long You leave it to Harry or Sam, Cause you're not your brother's keeper, And you don't give a damn?

Maybe tonight the fights are on Or you're going to the old ball game, So what the hell, if the guy is sick, He has only himself to blame.

Well, Mister, you have a perfect right to work your own AA And you know you'll do it your way, No matter what I say.

But, tonight, before you go to bed, Just look in the glass and pray, That you and the Lord know the answer to ...

WHAT DID YOU DO TODAY?

1982 "AA" SERVATHON

(There will be no dues or fees)

WHERE:- PLACENTIA

201 No. Bradford Ave.
Backs Community Bldg
See map below.

WHEN:- SATURDAY SEPT. 25TH

WHATIZZIT?:-

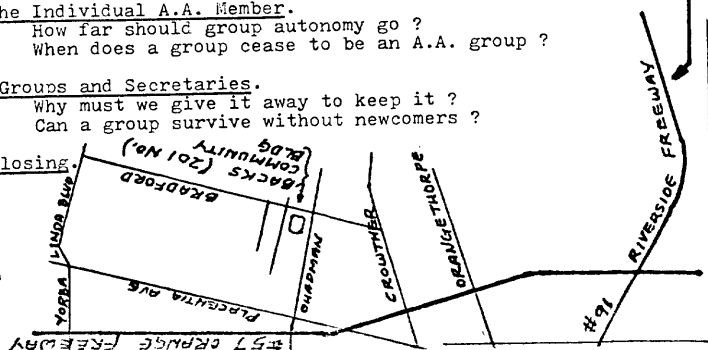
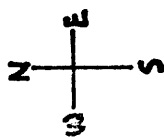
Seven hours of exhilarating discussion on current controversial subjects--see schedule.

SCHEDULE

In Fellowship



- This will be a "Do-it-yourselfer" in the food department. We'll furnish the "Coffee".
- 9:00 to 9:30 A.M. COFFEE AND DO-NUTS
 - 9:30 A.M. Opening remarks by Delegate.
 - 9:35 A.M. Public Information.
Problems other than alcohol.
How do court referral programs affect A.A. as a whole ?
 - 10:30 A.M. Intergroups and Central Service.
Are membership rules needed to keep A.A. pure ?
Where do we draw the line on membership ?
 - 11:30 A.M. Related Facilities.
Is abstinence all there is ?
Can sobriety be achieved without a spiritual concept ?
 - 12:30 P.M. General Service.
Dual Addiction--Pro and Con.
Are special interest groups a threat to A.A. ?
 - 1:30 P.M. H and I Committees.
Should a group have its own 12 step program ?
Do social functions belong in an A.A. group ?
 - 2:30 P.M. The Individual A.A. Member.
How far should group autonomy go ?
When does a group cease to be an A.A. group ?
 - 3:30 P.M. Groups and Secretaries.
Why must we give it away to keep it ?
Can a group survive without newcomers ?
 - 4:25 P.M. Closing.
 - 4:30 P.M.



SUBSCRIBE TO LIFELINE

_____ YRS. AT \$4.00 PER YEAR
REMITTANCE ENCLOSED: \$ _____

NAME _____
ADDRESS _____ CITY _____
STATE _____ ZIP _____ TELEPHONE _____

MAIL TO: LIFELINE
2712 S. GRAND AVE.
SANTA ANA, CA 92705



Group Directory

SEPTEMBER 1982 MEETING DIRECTORY



**A.A.
CENTRAL OFFICE**
2712 S. Grand Avenue
Santa Ana, CA 92705
TELEPHONE: (714) 556-4555

FROM:
San Clemente, Dana Point, Laguna Beach,
Capistrano Valley Areas
TELEPHONE: (714) 496-8407

HOURS:
Weekdays 8 a.m. to 9 p.m.
Saturdays 9 a.m. to 4:30 p.m.
Sunday & Holidays 10 a.m. to 4:30 p.m.
ANSWERING SERVICE ALL OTHER HOURS

Published by:
ORANGE COUNTY INTERGROUP ASSOCIATION
of
ALCOHOLICS ANONYMOUS

CODES:
Meetings are open and begin at 8:30 p.m. unless otherwise noted.

- Daytime Meetings
- † Not Equipped For Handicapped (Stairs)
- (C) Alcoholics Only
- (NS) No Smoking
- (G) Gay

SUNDAY

ANAHEIM

- DISC., Noon, 821 S. Brookhurst, Unit #7
- DISC., 5:30 p.m., 821 S. Brookhurst, Unit #7
- (C) DISC., 7 p.m., 3154 E. La Palma, Suite F
- † SPKR., 11 a.m., 202 W. Broadway, Club
- † BEGINNERS PART., 202 W. Broadway
- † (C) DISC., 5:30 p.m., 202 W. Broadway
- † HISPANO, 11 a.m., 202 W. Broadway

ANAHEIM HILLS

- DISC., 7:30 p.m., Fed. Savings,
5550 Santa Ana Canyon Rd.
- DISC., 6:30 a.m., 5550 Santa Ana Canyon Rd.

BUENA PARK

- SPKR., 8 p.m., 8150 Knott Ave., Teen Cntr.

COSTA MESA

- HIGH NOON PART., 2040 Placentia, Club
- SPKR., Oddfellow's, 7:30 p.m., 2476 Newport
- DISC., 7:30 p.m., 2040 Placentia, Club
- DISC., 7 a.m., 2040 Placentia, Club
- DISC., 9:30 a.m., Sunday Morning Breakfast Leo's
- STEP-SPEAKER, 8:00 p.m., 148 E. 22nd St. (Church)
- LITTLE NOON PART., 2040 Placentia
- MEN'S STAG, 7 p.m., 2015 Charle St.

CYPRESS

- (C) WMN. STUDY, 7 p.m., 5900 Ball Rd., S & L

DANA POINT

- Q & A, 10 a.m., Hospital Dining Room

FOUNTAIN VALLEY

- SPKR., Comm. Center, 8 p.m., 10200 Slater
- 11th STEP, 11 a.m., 210 Crow Lane

FULLERTON

- YNG. PEOPLE, 6 p.m., 705 N. Harbor Blvd.
- † (C) DISC. 8 p.m., 204 E. Amerige St.
- SPKR. 10:30 a.m., 705 N. Harbor Blvd., Club
- (C) DISC., 8 p.m., 705 N. Harbor Blvd.
- PART., 2:30 p.m., 705 N. Harbor Blvd.

GARDEN GROVE

- 12 Noon, 9845 Belfast Dr., Club
- DISC. 7:30 p.m., Main & Stanford, Church
- (C) DISC. 5:30 p.m., 9845 Belfast Drive
- 12 & 12 STUDY, 7:30 p.m., 9845 Belfast Dr., Club
- PART., HISPANO, 7:30 p.m., 13354 Century Blvd.

HUNTINGTON BEACH

- (C) DISC., 7:30 p.m., 8251 Heil School (Teachers Lounge)

IRVINE

- (C) DISC. 7:30 p.m., UCI Humanities Bldg.
- (C) (NS) DISC., 12 Noon, Senior Citizens Center

LAGUNA BEACH

- DISC., 2 p.m., 1945 Broadway, Club
- DISC., 1945 Broadway, Club
- 11th STEP STUDY, 11:30 a.m., Club
- DISC., 10 a.m., Park (Corner Cliff & Jasmine)
- (C) DISC., 7:05, 3090 S. Coast Hwy. (School Aud.)
- (G) PART., 7:30 p.m., 428 Park Ave. (Guild Hall)
- BEACH GROUP, 9 a.m., Lake & Pacific Coast Hwy.

LAGUNA NIGUEL

- (NS) SPKR., 8 p.m., Comm. Park, Crown Valley Pkwy.

LA HABRA

- (C) STUDY, 8 p.m., 631 N. Euclid

LA MIRADA

- LA MIRADA SPEAKERS, 8 p.m., 14407 Rosecrans Ave., (Ch.)

NEWPORT BEACH

- DISC., 11:30 a.m., 414 E. 32nd St., Club
- (C) DISC., 7:30 p.m., 414 E. 32nd St.
- SPKR., 7:30 p.m., 1300 N. Bristol St.
- DISC., 9:30 a.m., on the beach at 14th St.

ORANGE

- SPKR., 8 p.m., 401 S. Tustin, Hospital
- DISC., 11 a.m., 219 Orange-Olive Rd.
- DISC., 7:30 p.m., 2191 Orange-Olive Rd.
- PART., 6 p.m., School, Hewes & Spring

SAN CLEMENTE

- DISC., 1:30 p.m., 324 Calle de Los Molinos
- DISC., 4:30 p.m., 324 Calle de Los Molinos
- DISC., 10:30 a.m., 324 Calle de Los Molinos
- DISC., 7:30 a.m., 324 Calle de Los Molinos
- DISC., 324 Calle de Los Molinos

SANTA ANA

- DISC., 11 a.m., 2045 N. Main St., Club
- OPEN DISC., 8 p.m., 2045 N. Main St.
- HISPANO, 7:30 p.m., 1802 S. Standard
- HISPANO, 12 Noon, 1321 S. Main Street
- DISC., 8 p.m., 1321 S. Main St.

SEAL BEACH

- 10 a.m., on the beach between 12th & 13th Sts.

STANTON

- SPKR. 1 p.m., 10936 Dale Ave.

SUNSET BEACH

- 11th STEP, 7 p.m., Bayview & Broadway
- 10 a.m., Warner & Coast Highway
- 5 p.m., (Womens Club) Bayview & Broadway

TUSTIN

- SPKR., 7:30 p.m., Civic Center, Main & Centennial
- † DOUGHNUTS, 10:30 a.m., Beverly Hills Savings (Corner of Irvine & Newport)
- PART., SPKR., Q & A, 9:02 a.m., W. Clubhouse, Devonshire at Sycamore, off Red Hill
- (C) DISC., 7:30 p.m., 14232 Red Hill at Mitchell

WESTMINSTER

- (C) DISC., 6 p.m., 13925 La Patta

MONDAY

ANAHEIM

- DISC., 7:30 p.m., 821 S. Brookhurst, Unit #7
- DISC., 12 Noon, 821 S. Brookhurst, Unit #7
- DISC., 5:30 p.m., 821 S. Brookhurst, Unit #7
- DISC., 8:30 p.m., 202 W. Broadway
- † (C) STAG, 202 W. Broadway, Club
- † (C) WOMEN, 202 W. Broadway
- † PART., 12 Noon, 202 W. Broadway

ANAHEIM HILLS

- DISC., 8 p.m., 5900 Santa Ana Canyon Rd., (Church)
- DISC., 6:30 a.m., 5550 Santa Ana Canyon Rd.

BALBOA

- 12 & 12 STUDY, 8:30, 115 Agate

COSTA MESA

- (C) BK. STUDY WOMEN, 7 p.m., 22nd & Newport, Church
- DISC., 12 Noon, 2040 Placentia, Club
- (C) WOMEN, 8 p.m., 2040 Placentia, Club
- (C) STAG, 8 p.m., 2015 Charle St.
- BEGINNERS, 2040 Placentia, Club
- DISC., 8 p.m., 2043 Orange Ave., Cor Bay
- DISC., 6 p.m., 2040 Placentia Ave.
- DISC., 7 a.m., 2040 Placentia, Club
- YOUNG PEOPLE PART., 3:30 p.m., 2040 Placentia

CYPRESS

- (NS) (C) DISC., 8 p.m., 6441 Lincoln Church

FULLERTON

- SPKR., 101 E. Valencia Mesa Dr., Hospital
- DISC., 11:30 a.m., 705 N. Harbor Blvd.
- BOOK STUDY, 705 N. Harbor Blvd.
- STAG., 6:30 p.m., 705 N. Harbor Blvd.
- (C) WOMEN, 6:30 p.m., 705 N. Harbor Blvd.

GARDEN GROVE

- DISC., 7:30 a.m., 9845 Belfast Dr.
- EASTGATE PART., 8 p.m., 8100 Garden Grove Blvd., #5
- DISC., STAG, 8 p.m., 9845 Belfast Dr.
- SPKR., Corner of Gilbert & Trask
- DISC., 8 p.m., 8501 Acacia St.
- (C) WOMEN, 8 p.m., 9845 Belfast Dr.
- PART., HISPANO, 7:30 p.m., 13354 Century Blvd.
- DISC., 12:30 p.m., 12741 Main St., Room #15C
- (C) WOMEN, 8 p.m., 9621 Bixby (Church)
- (C) DISC., 12:30 p.m., Main & Stanford, (Church)

HUNTINGTON BEACH

- 12 & 12 STUDY, 8 p.m., 6662 Heil St.
- BG BK STUDY, 8 p.m., 18631 Chapel Lane
- (C) DISC., 7 p.m., 16541 Gothard
- BEG. STEP STUDY, 8 p.m., 16400 Springdale, (Church)

IRVINE

- CANDLELIGHT DISC., 8 p.m., 14901 Greenbrae
- (C) STUDY, 8 p.m., Irvine Ctr. Dr. & Yale, Church
- 8 p.m., University & Culver Church

LAGUNA BEACH

- (C) STAG, 1945 Broadway Club
- BG BK STUDY, 12:30 p.m., 1945 Broadway

- (C) WOMEN DISC., 8 p.m., 363 Gleneyre Library
- (G) (C) STP. STUDY, 31872 Coast Hwy., Hospital
- (C) DISC., 7:05 a.m., 3090 S. Coast Hwy., (School Aud.)
- BIG BOOK STUDY, 6 p.m., 1945 Broadway
- YOUNG PEOPLE, 8:30 p.m., 775 Broadway

LAGUNA HILLS

STUDY, 8 p.m., El Toro offramp. Church

LA HABRA

- (C) WOMEN DISC., 10:30 a.m., 631 N. Euclid

LA MIRADA

DISC., 14407 E. Rosecranz Ave., Church

MISSION BEACH

(C) DISC., 7:30 p.m., 24772 Chrisanta

NEWPORT BEACH

- † WOMEN, 10:30 a.m., 414 E. 32nd St.
- † (C) DISC., 414 E. 32nd St., Club
- † SPONSORSHIP DISC., 5:30 p.m., 414 E. 32nd St.
- DISC., 8 p.m., Baywood Dr., Baywood Rec. Rm. 1
- DISC., 12 Noon, Health Center, 1300 N. Bristol
- LIVING SOBER STUDY, 8 p.m., 2100 Mar Vista, Church

ORANGE

- SPKR., 2191 Orange Olive Rd., Club
- DISC., 12 Noon, 2191 Orange Olive Rd.
- (C) WOMEN DISC., 7:30 p.m., 710 S. Cambridge

PLACENTIA

PARTICIPATION, 1314 Angelina, Church

SAN CLEMENTE

- DISC., 202 Avenida Aragon, Church
- (C) WOMEN, 12:30 p.m., 324 Calle de Los Molinos
- BEG., 324 Calle de Los Molinos
- DISC. MEN'S STAG, 6 p.m., 324 Calle de Los Molinos
- (NS) DISC., 7:30 p.m., 324 Calle de Los Molinos

SANTA ANA

- (C) WOMEN DISC., 1 p.m., 910 N. French St.
- HISPANO, 8 p.m., 1802 S. Standard
- 12 NOON STUDY, 2045 N. Main St.
- SPKR., 2045 N. Main St., Club
- MEN'S STAG, 8 p.m., Elk's Lodge, 1st & Lyon St.
- HISPANO DISC., 8 p.m., 1321 S. Main St.
- HISPANO DISC., 8 p.m., 1921 W. Washington
- BIG BOOK STUDY, 8 p.m., 1601 Orchard St.
- (C) WOMEN STEP STUDY, 7:30 p.m., 2724 N. Bristol, #01
- 8 p.m., 1027 W. Walnut Park
- DISC., 7 a.m., 2045 N. Main St.

STANTON

DISC., 8 p.m., 10936 Dale Ave.

SUNSET BEACH

STEPS 10-11-12, 5:30 p.m., 16865 Pacific Coast Hwy.

TUSTIN

- (C) MEN'S STAG PART., 8 p.m., Main & C Sts.
- (C) DISC., 7:30 a.m., Reubens, 1513 N. Tustin
- (C) WOMENS DISC., 8 p.m., 1201 Irvine (Church-Rm. 9)

WANDERING GROUP

SO. COAST MEN'S STAG ROVING GROUP,
Call 546-4555 — For Information

WHITTIER

(C) WOMEN, 15215 Janine

WESTMINSTER

(C) WOMEN DISC., 7382 Garden Grove Blvd.
(C) 12 & 12 STUDY, 7:30 p.m., 15750 Magnolia

YORBA LINDA

(C) STUDY, 8 p.m., Ohio & Yorba Linda, Rm. 5

ANAHEIM, TUESDAY

- † STEP STUDY, 202 W. Broadway, Club
- DISC., 7:30 p.m., 821 S. Brookhurst, Unit #7
- DISC., 12 Noon, 821 S. Brookhurst, Unit #7
- DISC., 5:30 p.m., 821 S. Brookhurst, Unit #7
- PART., 8 p.m., 1830 W. Romneya Dr., Hospital
- (C) WOMEN BEG., 1:30 p.m., 703 N. Lemon
- SPKR., 202 W. Broadway
- PART., 8 p.m., Magnolia & Orange, Church
- 12 Noon, 202 W. Broadway, Club
- DISC., 6:30 a.m., 5550 Santa Ana Canyon Rd.

BREA

BOOK STUDY, 8 p.m., 300 E. Imperial

BUENA PARK

SPAN. SPK. DISC., 8 p.m., 7691 Orangethorpe
(C) STUDY, 8 p.m., Rec. Bldg.-Rm. D, 8150 Knott

CATALINA ISLAND

STUDY, 8 p.m., St. Catherine's Church

CORONA DEL MAR

- † DISC., 12 Noon, 611 Heliotrope

COSTA MESA

- BK. STUDY (LIVING SOBER), 6 p.m., 2040 Placentia
- DISC., 7 a.m., 2040 Placentia
- † PART., 8 p.m., Grange Hall, Victoria & Thurin
- SPKR., 2040 Placentia
- (C) MEN'S DISC., 8 p.m., 1865 Anaheim St.
- BIG BK. STEP STUDY, 12 Noon, 2040 Placentia

DANA POINT

PART., Carpenter's Hall, 24692 Del Prado

FULLERTON

- LERTON, 1231 E. Chapman, Church
- DISC., 11:30 a.m., 705 N. Harbor Blvd.
- PART., 8 p.m., 137 E. Glenwood
- DISC., 705 N. Harbor Blvd.

GARDEN GROVE

- PART., 8 p.m., 9845 Belfast Dr.
- DISC., 12:30 p.m., 9845 Belfast Dr.
- STP. STUDY, 8 p.m., 12141 Lewis Bay, #6
- PART. HISPANO, 7:30 p.m., 13354 Century Blvd.
- DISC., 7:30 a.m., 9845 Belfast Dr.

HUNTINGTON BEACH

- DISC., 8 p.m., 18631 Chapel Lane at Ellis
- (C) WOMEN, 1 p.m., Rosalynne Rest., Edinger & Gothard
- DISC., 8 p.m., City Hall, 2000 Main St.
- DISC., 8 p.m., 6662 Heil
- (C) WOMEN, Q & A, 1 p.m., 18631 Chapel Lane
- (C) WOMEN STUDY, 8 p.m., 8186 Constantine

IRVINE

- (C) MEN'S STAG, 8 p.m., University & Culver
- WOMEN, 8 p.m., University & Culver
- (C) (NS) STAG, 8 p.m., University & Culver
- (C) WOMEN, STEP STUDY, 7:30 p.m., Irvine Center Dr. and Yale (Church)

LAGUNA BEACH

- DISC., 12:30 p.m., 1945 Broadway, Club
- (C) STEP STUDY, 1945 Broadway, Club
- (NS) (C) WOMEN, 12:30 p.m., 340 St. Annes Dr.
- (C) DISC., 7:05 a.m., 3090 S. Coast Hwy. (School Aud.)
- (C) 11th STP. STUDY, 8 p.m., Turner Hall Church, 2nd & Forest
- HERE & NOW 6, 7:30 p.m., 1945 Broadway

LAGUNA NIGUEL

(C) BK STUDY, Crown Valley & Sea Island
STP. STUDY, Comm. Pk., Crown Valley Pkwy.

LAKE FOREST

BIG BOOK STUDY, 8 p.m., 22922 Centre,
Amigos Salon

LA MIRADA

DISC., 15144 Leffingwell Ave.

LOS ALAMITOS

- ROSSMOOR PART., 8 p.m., 12100 Montecito (Club House)
- DISC., 8 p.m., Church, (1 blk west of Katella & Los Alamitos)

NEWPORT BEACH

- NEWCOMERS, 7 p.m., 3209 Via Lido Soud, Church
- † SPKR., 3209 Via Lido Soud, Church
- (C) STAG DISC., 1714 W. Balboa Blvd.
- † (C) WOMEN DISC., 414 E. 32nd St.
- † DISC., 5:30 p.m., 414 E. 32nd St.
- (C) WOMEN DISC., 12 Noon, 1300 N. Bristol, Library

ORANGE

- (C) DISC., 1130 Walnut, Church
- STUDY, 2191 Orange Olive Rd.
- DISC., 12 Noon, 2191 Orange Olive Rd.
- (C) WOMEN STUDY, 12 Noon, 777 S. Main, #116
- Town & Country Center
- NEWCOMERS, 8 p.m., Garden Grove Fwy. at Glassel
- Hart Park, Clubhouse

SAN CLEMENTE

- DISC., 324 Calle de Los Molinos
- 12:30 p.m., 324 Calle de Los Molinos
- PART., 6 p.m., 324 Calle de Los Molinos

SANTA ANA

- DISC., 2045 N. Main St., Club
- DISC., 12 Noon, 2045 N. Main St., Club
- HISPANO, 8 p.m., 1801 S. Standard
- PART. HISPANO, 8 p.m., 1321 S. Main

- 12 & 12 STUDY, 8 p.m., 409 N. Cooper
- (C) MEN'S STAG (G), 8 p.m., 614 Bush (Church)
- OPEN PART., 8 p.m., 1027 W. Walnut
- (C) DISC., 7 a.m., 2045 N. Main

STANTON

- SPEAKER, 8 p.m., 10936 Dale

SUNSET BEACH

WOMENS DISC., 8 p.m., 16865 Pacific Coast Hwy.

TUSTIN

- SPKR., 8 p.m., Newport & Dodge, Church
- (C) DISC., 8 p.m., 1221 Wass, Church
- (C) STEPS 1-4, 8 p.m., 1201 Irvine, Church
- DISC., 11:30 a.m., M.C.A.S (H) Chapel
- (C) DISC., 7:30 a.m., Reubens, 1513 N. Tustin

WESTMINSTER

DISC., 8 p.m., 8152 McFadden
OPEN DISC., 8 p.m., 7232 20th St.

YORBA LINDA

- (C) WOMEN, 8 p.m., Corner of Ohio & Yorba Linda, Church
- (NS) STUDY, 8 p.m., Corner of Ohio & Yorba Linda, Church

WEDNESDAY

ANAHEIM

- DISC., 8 p.m., 128 W. Broadway
- BEGINNERS, 7:30 p.m., 821 S. Brookhurst, Unit #
- STP. STUDY, 5:30 p.m., 821 S. Brookhurst, Unit #
- BIG BOOK STUDY, 12 Noon, 821 S. Brookhurst,
- † HISPANO & ENGLISH, 202 W. Broadway
- † (C) WOMEN, 1 p.m., 202 W. Broadway
- † SPKR., 202 W. Broadway
- Q & A, 11:30 a.m., 202 W. Broadway, Club

ANAHEIM HILLS

DISC., 6:30 a.m., 5550 Santa Ana Canyon Rd.

CORONA DEL MAR

DISC., 8 p.m., 811 Heliotrope
PART., 8 p.m., West Fed. S & L, Coast Hwy. South o
Newport
Center Drive, #4 Corporate Plaza

COSTA MESA

- Q & A, 2040 Placentia
- DISC., 8 p.m., 301 Victoria Ave., Hospital
- (C) STAG STUDY, 8 p.m., 2015 Charle St.
- (C) WOMEN, 3 p.m., 2040 Placentia
- STEP STUDY, 6 p.m., 2040 Placentia
- DISC., 7 a.m., 2040 Placentia
- PART., 12 Noon, 2040 Placentia, Club
- (C) WOMEN STEP STUDY, 8 p.m., 148 E. 22nd St., Church
- GOAT HILL SPKRS., 8:30 p.m., 661 Hamilton

EL TORO

- DISC., 11:30 a.m., 1 p.m., Ch. Annex MCAS

FOUNTAIN VALLEY

DISC., 8 p.m., 10280 Slater Ave., Church

FULLERTON

- SPEAKER, 705 N. Harbor Blvd., Club
- HISPANO, 8 p.m., 1231 E. Chapman, Church
- DISC., 11:30 a.m., 705 N. Harbor Blvd.
- STEP STUDY, 5:30 p.m., 705 N. Harbor Blvd.

GARDEN GROVE

- 6 p.m., 9845 Belfast
- (C) STAG, 13091 Galway, Church
- YOUNG PEOPLE, 9845 Belfast Dr.
- BIG BK STUDY, 8 p.m., 9845 Belfast Dr.
- (C) SERENITY, 8 p.m., 9621 Bixby, Church
- TRAD. WORKSHOP, 5:30 p.m., 9845 Belfast Dr.
- BEGINNERS PART., Corner of Gilbert & Trask
- PART. HISPANO, 7:30 p.m., 13354 Century Blvd.
- DISC., 7:30 a.m., 9845 Belfast Dr.

HUNTINGTON BEACH

- (NS) DISC., 8 p.m., 6662 Heil
- PART., Civic Center, 2000 Main St.
- (C) WOMEN'S STUDY, 1 p.m., 9812 Hamilton
- MEN'S WANDERING, Call 556-4555 for information
- (C) WOMEN, 7:30 p.m., 16541 Gothard & Heil
- (C) WOMEN, 8 p.m., 8251 Heil, (School)
- (NS) DISC., 8 p.m., 6662 Heil, (Annex Ch.)

IRVINE

- (C) DISC., 12 Noon, 3883 Parkview (Clubhouse)
- BEGINNERS, 8 p.m., University & Culver
- (C) STAG, 7:30 p.m., 2495 Campus Dr.

LAGUNA BEACH

- SPKR. WOMENS' CLUB, St. Anne & Gleneyre
- (C) DISC., 12:30 p.m., 1945 Broadway, Club
- (C) DISC., 7:05 p.m., 3090 S. Coast Hwy., (School Aud.)
- STUDY, 7:30 p.m., 363 Gleneyre Library
- BEGINNERS, 6 p.m., 1945 Broadway
- SPKR., 8:30 p.m., 1945 Broadway

LAGUNA HILLS

- (NS) (C) WOMEN, 8 p.m., Saddleback Hospital

LA HABRA

- (C) WOMEN PART., 8 p.m., 1251 W. Lambert, (Hosp.)
- MEN'S STAG, 8:30 p.m., 951 Idaho
- MEN'S STAG, 8:30 p.m., 631 N. Euclid, (Church)

LA MIRADA

- (C) WOMEN, 14407 E. Rosecranz, (Church)

LOS ALAMITOS

- (C) STUDY, 7:30 p.m., Bldg. #3, Rm. 14-D, Air Station

MISSION VIEJO

- DISC., Ch. Oso & Marguerita Sts. (Church)
- (NS) (C) WOMAN, 9:30 a.m., Oso & Marguerita

NEWPORT BEACH

- (C) DISC., 7:30 p.m., 1300 Bristol St. North
- † DISC., 12 Noon, 414 E. 32nd St., Club
- † DISC., 5:30 p.m., 414 E. 32nd St.
- TEEN DISC., 7:30 p.m., 1441 Superior, Rear
- † DISC., 880 Irvine, N. Conf. Rm.-Oakwood
- † (C) BG BK STUDY, 7:30 p.m., 414 E. 32nd St.

ORANGE

- DISC., 12 Noon, 2191 Orange-Olive Rd.
- PART., 2191 Orange-Olive Rd.
- DISC., 8 p.m., 1215 W. La Veta, 3rd Floor, (Hosp.)
- † 12 & 12 STUDY, 8 p.m., 3807 Silverleaf

PLACENTIA

- DISC., 8 p.m., 1301 Rose Dr., Hospital

SAN CLEMENTE

- SPKR. Q & A, 324 Calle de Los Molinos
- (NS) DISC., 7:30 a.m., Calle De Los Molinos
- 12:30 Noon, Calle de Los Molinos
- DISC., Christ Lutheran Church
- 12 & 12 STUDY, 6 p.m., 324 Calle de Los Molinos
- (NS) DISC., 7:30 p.m., 35522 Camino Capistrano
- (1st and 3rd Wednesday each month)
- LITERATURE STUDY, 8:00 p.m., 202 Avenida Aragon
- (Ch.)

SANTA ANA

- (C) WOMEN, 8 p.m., 910 N. French St.
- DISC., 2045 N. Main St., Club
- HISPANO SPKR., 8 p.m., 1802 S. Standard
- HISPANO, DISC., 8 p.m., 1321 S. Main St.
- DISC., 12 Noon, 2045 N. Main St.
- (C) DISC., 7 a.m., 2045 N. Main St.
- BIG BOOK STUDY, 8 p.m., 1027 W. Walnut

SEAL BEACH

- MEN'S STAG BG BK STUDY, 138 8th St., Church

STANTON

- Civic Center, 8 p.m., 7800 Katella Ave.

SUNSET BEACH

- NEWCOMERS, 7 p.m., 16865 Pacific Coast Hwy.
- BIG BOOK STUDY, 8:30 p.m., 16865 Pacific Cost Hwy.

TUSTIN

- (C) WOMEN, DISC., 8 p.m., 1201 Irvine, Rm. 7
- (C) WOMEN, STEP STUDY, 8 p.m., 1201 Irvine, Rm. 6
- (C) DISC., 7:30 a.m., Reubens, 1513 N. Tustin
- (C) BG BK STUDY, 7:30 p.m., 1201 S.E. Irvine Blvd., (Church)

WANDERING GROUP

- BOOK STUDY, 8 p.m., Call 556-4555 for information

WHITTIER

- (C) DISC., 7 a.m., 10925 S. Valley, Home

YORBA LINDA

- DISC., 8 p.m., So. Ohio & Yorba Linda, Rm. #5

THURSDAY**ANAHEIM**

- DISC. HISPANO, 202 W. Broadway, upstairs
- DISC., 12 Noon, 821 S. Brookhurst, Unit #7
- DISC., 7:30 p.m., 821 S. Brookhurst, Unit #7
- DISC., 5:30 p.m., 821 S. Brookhurst, Unit #7
- (C) WOMEN, 7:30 p.m., 703 N. Lemon
- † SPKR., 202 W. Broadway, Club
- † BOOK STUDY, 12 Noon, 202 W. Broadway
- MEN'S 12 & 12 STUDY, 8 p.m., 107 W. Elm

WANDERING GROUP, Call 539-7040 for information

ANAHEIM HILLS

- DISC., 6:30 a.m., 5550 Santa Ana Canyon Rd.

BREA

- DISC., 300 Imperial, Church

BUENA PARK

- PARTICIPATION, 7691 Orangethorpe Ave.

CATALINA ISLAND

- DISC., 8 p.m., St. Catherine's Church

CORONA DEL MAR

- † Q & A, 7:30 p.m., Heliotrope Ave.

COSTA MESA

- DISC., 2040 Placentia Ave., Club
- DISC., 7 a.m., 2040 Placentia
- DISC., 7 p.m., 2043 Orange at Bay, Church
- OPEN DISC., 12 Noon, 2040 Placentia
- DISC., 10:30 p.m., 2040 Placentia, Church
- TRADITIONS, 6 p.m., 2040 Placentia
- YOUNG PEOPLE PART., 3:30 p.m., 2040 Placentia

FULLERTON

- (C) STAG MEN, 736 W. Amerige
- (C) WOMEN, 8 p.m., 1201 Dorothy Lane, (Church)
- STUDY, 11:30 a.m., 705 N. Harbor Blvd.
- STEP STUDY, 705 N. Harbor Blvd.
- (C) WOMEN, 6:30 p.m., 705 N. Harbor

GARDEN GROVE

- BG BK STUDY, 7:30 p.m., 8501 Acacia (Corner of Dale)
- BEGINNERS, 8100 Garden Grove Blvd., #5
- DISC., 7:30 a.m., 9845 Belfast IDr.
- STUDY, 12:30 p.m., 9845 Belfast Dr.
- SPKR., 9845 Belfast Dr.
- (C) WOMEN, 1 p.m., 9621 Bixby (Church)
- PART. HISPANO, 7:30 p.m., 13354 Century Blvd.
- DISC., 7:30 p.m., 10111 Larson St.

HUNTINGTON BEACH

- BOOK STUDY, 8 p.m., Sun View School, Bldg. C1
- Julliette Low Road
- DISC., 12 Noon, Edinger & Golden West
- SPKR./PART., City Hall, 2000 Main St.

IRVINE

- BOOK STUDY, STAG, 8 p.m., Culver & University
- (C) WOMEN, 7:30 p.m., Center Dr. & Yale (Church)

LAGUNA BEACH

- BEGINNERS, 1945 Broadway, Club
- (C) WOMEN, 12:30 p.m., 428 Park Ave.
- (C) WOMEN, 6 p.m., 1945 Broadway, Club
- DISC., 7:05 a.m., 3090 S. Coast Hwy., (School Aud.)
- (G) CROSS TALK, 8 p.m., 31872 Coast Hwy., Hosp.

LAGUNA NIGUEL

- (C) WOMENS, 7:30 p.m., 33841 Niguel Rd.

MIDWAY CITY

- 8 p.m., Hazard & Newland, Hut

MISSION VIEJO

- (C) STUDY, 7:30 p.m., 26872 Estanciero, Church

NEWPORT BEACH

- (NS) SPKR., Q & A, 8 p.m., 600 St. Andrews Rd., Church

- BEGINNERS, 12 Noon, 414 E. 32nd St., Club

- NEWCOMERS, 7-8 p.m., 515 Balboa Blvd.

- SPKR., Ebell Club, 515 W. Balboa Blvd.

- DISC., 12 Noon, 1300 N. Bristol St., Library

ORANGE

- PART., 7 p.m., UCI Med. Center, Marigold Rm.

- (C) WOMEN STUDY, 12 Noon, 777 S. Main, #116

- BEGINNERS, 2191 Orange-Olive Rd.

- DISC., 12 Noon, 2191 Orange-Olive Rd.

- PART., 8 p.m., 401 S. Tustin, Hospital

- PART., 8 p.m., 77 S. Main, #116

- PART., 7 p.m., (UC/MC Cafeterial) 101 City Dr. So.

SAN CLEMENTE

- DISC., 6 p.m., 324 Calle de Los Molinos

- SPKR./DISC., 324 Calle de Los Molinos

SAN JUAN CAPISTRANO

- STAG, 32202 Del Obispo, Church

SANTA ANA

- DISC., 12 Noon, 2045 N. Main St., Club
- BEGINNING, 2045 N. Main St.
- HISPANO DISC., 8 p.m., 1802 S. Standard
- DISC., 8 p.m., 5306 W. McFadden, Church
- HISPANO PART., 8 p.m., 1321 S. Main St.
- SPKRS. MEETING, 8 p.m., 3602 W. 5th St., Union Hall

PART. ALTERNATE CARE, 1400 W. McFadden, Suite 1

- DIC, 8 p.m., 1802 S. Standard

- (C) DISC., 7 a.m., 2045 N. Main
- (C) DISC., ENGLISH SPKG., 8 p.m., 1802 S. Standard
- SPEAKERS, 8 p.m., 2538 S. Main

SEAL BEACH

- 8 p.m., St. Anne's Church, 10th and Coast Hwy.

STANTON

- CANDLELIGHT PART., 8 p.m., 10936 Dale Ave.

SUNSET BEACH

- DISC., 7:30 p.m., Bayview & Broadway

TUSTIN

- (C) DISC., 7:30 a.m., Reubens, 1513 N. Tustin
- (C) 12 & 12 STUDY, 8 p.m., 1201 Irvine, (Church)
- (C) PART., 11:30 a.m., MCAS

WESTMINSTER

- DISC. HISPANO, 8 p.m., 13925 La Patta

WHITTIER

- SPKR., 11030 Carmenita Rd., Women's Club

YORBA LINDA

- (NS) DISC., 8 p.m., Corner of Ohio & Yorba Linda

ANAHEIM FRIDAY

- DISC., 11 p.m., 821 S. Brookhurst, Unit #7
- DISC., 7:30 p.m., 821 S. Brookhurst, Unit #7
- DISC., 12 Noon, 821 S. Brookhurst, Unit #7
- MEN'S STAG, Upstairs, 202 W. Broadway
- † DISC., 12 Noon, 202 W. Broadway
- DISC., 5:30 p.m., 821 S. Brookhurst, Unit #7
- † HISPANO DISC., 202 W. Broadway
- SPKR., 1830 W. Romney Dr., Hospital
- † PARTICIPATION, 202 W. Broadway
- † (C) STAG, 310 W. Broadway, Basement
- † DISC., 11 p.m., 202 W. Broadway
- † 12 & 12 STUDY, 202 W. Broadway, Club
- SPKR., Memorial Hospital, 1111 La Palma

ANAHEIM HILLS

- DISC., 8 p.m., Fed. Savings, 5550 Santa Ana Canyon Road at Imperial
- DISC., 6:30 a.m., 5550 Santa Ana Canyon Dr.

BUENA PARK

- PART., 8:30 p.m., 6711 Beach Blvd.
- 10:30 p.m., 5711 Beach Blvd.

CATALINA ISLAND

- AS BILL SEES IT, 12 Noon, St. Catherine's Church

CORONA DEL MAR

- † (C) DIS., 611 Heliotrope Ave.

COSTA MESA

- (NS) DISC., 7 a.m., 2040 Placentia
- PART., 2040 Placentia
- DISC., 6 p.m., Grapevine, 2040 Placentia
- DISC., 7 a.m., 2040 Placentia, Club
- SPKR., 2040 Placentia, Club
- DISC., 12 Noon, 2040 Placentia
- STUDY, 787 Hudson St.

- (C) DISC., 8 p.m., 1865 Anaheim St.

- CANDLELIGHT PART., 11 p.m., 2040 Placentia

- (NS) DISC., 8 p.m., 2987 Mesa Verde Dr.

CYPRESS

- SPEAKER/DISC., 8 p.m., 5900 Ball Rd.

DANA POINT

- SADDLEBACK SPKRS., 24692 Del Prado,

Carpenter's Hall

FULLERTON

- SPKR., 101 E. Valencia Mesa Dr., Hospital
- (C) STUDY, 1201 E. Dorothy Lane, (Church)
- PART., 11:30 a.m., 705 N. Harbor Blvd.
- TOPIC DISC., 705 N. Harbor Blvd.
- HISPANO, 8 p.m., 244 E. Valencia
- SPEAKERS, 16850 Bastanchury Rd., (Hosp. Annex)

GARDEN GROVE

- (C) WOMEN, 10:30 a.m., 12471 Main, #15, Church
- PART., 8 p.m., 9845 Belfast Dr.
- PART., 8 p.m., 9845 Belfast Dr.
- PART., 11 p.m., 9845 Belfast Dr.
- (C) WOMEN, 8 p.m., 9621 Bixby, (Church)
- PART., 8 p.m., 13472 Gilbert
- DISC., 7:30 a.m., 9845 Belfast Dr.
- DISC., 6:30 p.m., 9845 Belfast Dr.
- PART. HISPANO, 7:30 p.m., 13354 Century Blvd.

HUNTINGTON BEACH

- 16541 Gothard, Rm. 113 Corner of Heil

